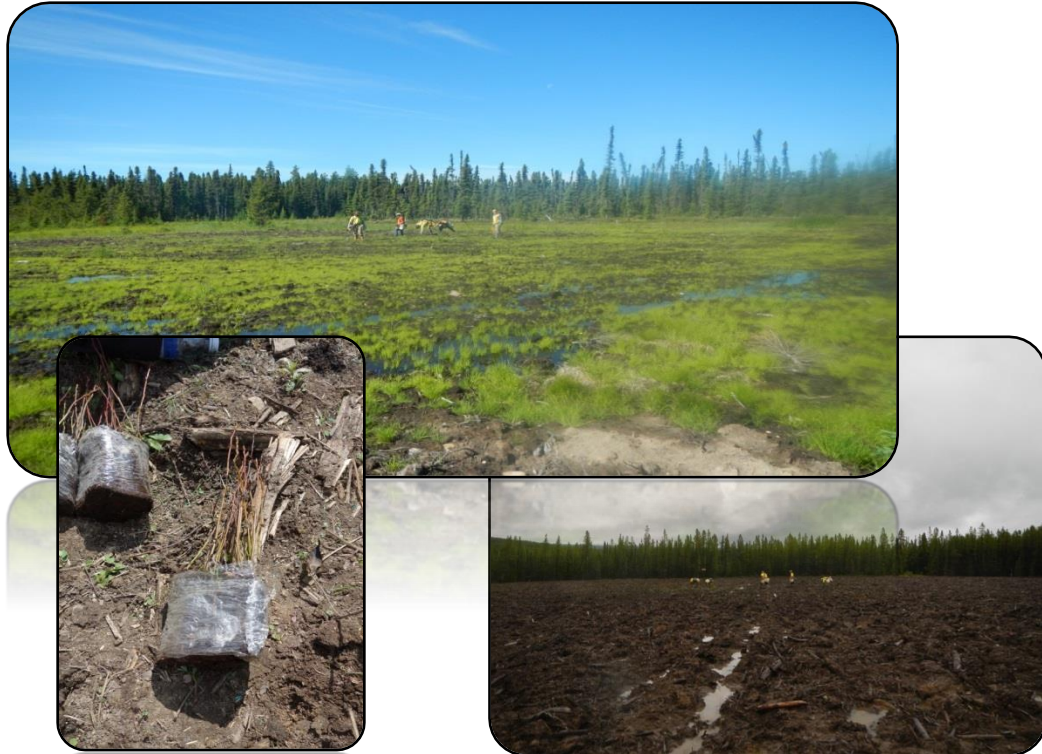


## Restoration: Remote Tree Planting



### Project Profile

This project was a large-scale tree-planting program on 30 hectares collectively of disturbed sites. The area varied from lowland fens/bogs to upland mixed boreal forest. The overall objective of reclamation and reforestation at the multi Ring Border field Sites was to encourage biodiversity, natural succession and return disturbed lands to an equivalent land capability.

### Issue

Equivalent land capability means that the ability of the land to support various land uses after conservation and reclamation will be similar to that which existed before the disturbance, but that individual land use will not necessarily be identical. We anticipated that the after disturbance land uses would be associated with a boreal mixed wood ecosystem. This includes plant biodiversity, wildlife production and limited recreational opportunities. In these areas, the goal of revegetation is to restore forested community types similar to those in the surrounding terrain except in localized depression areas that are too wet for tree growth.

### Solution

We prepared a tree planting plan incorporating all the different land types and uses and mapped out the various tree types to be planted in each area. Due to the expansiveness of the area to plant, we had several crews that completed the planting and one central coordinator and storage area. We also ensured that the trees planted were indigenous species to the area.

### Outcome

We met the objective within one growing season. We observed increased wildlife grazing and increased natural ingress was prevalent.